

# WARNING

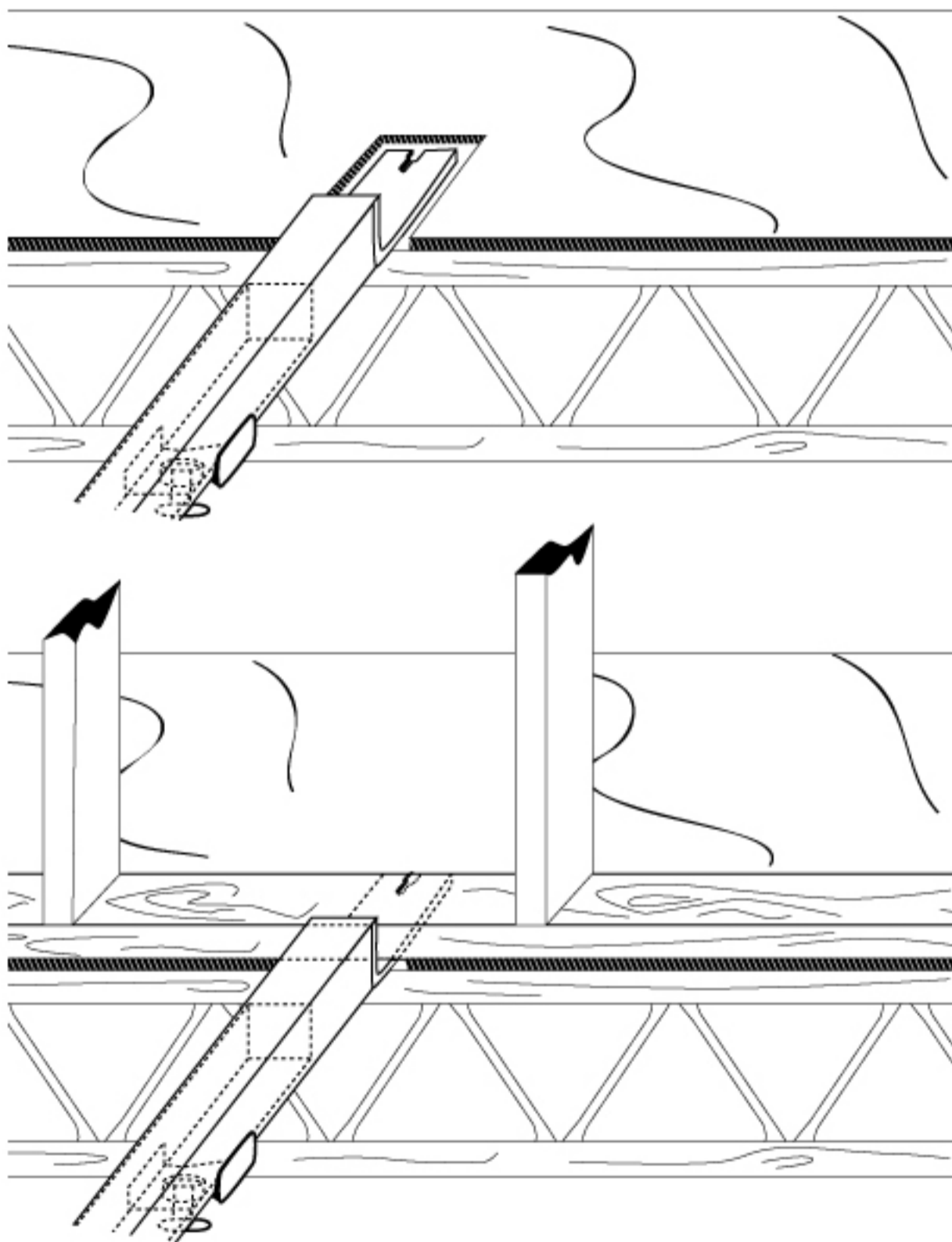
## DO NOT ALTER SCAFFOLD

### FRAMING GUIDE FOR STAIR VOID PLATFORMS

Buildsafe's Void Platforms are designed so as to provide protection from fall into a void as early as possible during construction. This will sometimes mean that Buildsafe have installed their platform prior to sheet flooring being laid. This should not hinder the installation of the walls.

IF YOU UNSECURE OR MAKE ADJUSTMENTS TO A VOID PLATFORM, YOU ARE NOW COMMITTED TO ENSURING IT REMAINS COMPLIANT AND IN A SAFE WORKING ORDER.

**THE SAFETY OF OTHERS IS NOW YOUR RESPONSIBILITY!**



SUGGESTED WALL ERECTION PROCEDURE:

1. NOTCH OUT SHEET FLOORING AROUND BRACKETS.
2. ERECT WALL ON SHEET FLOOR STRAIGHT OVER THE TOP OF BRACKETS.
3. BUILDSAFE CAN RETRIEVE BRACKETS FROM UNDERNEATH WALLS AT THE TIME OF VOID PLATFORM REMOVAL.

**AVOID REMOVING ANY SCREWS OR BOLTS TO VOID PLATFORM BRACKETS**

IF IT DOESN'T LOOK RIGHT, IT PROBABLY ISN'T RIGHT.

Call your site supervisor or Buildsafe immediately if you feel platforms are not safe.



*Safety doesn't happen by accident*  
**DELIVERING SAFETY SOLUTIONS**  
to the building industry

Void Protection & Pool Safety Systems  
Mobile & Quickstage Aluminium Scaffolds  
Perimeter, Rafter & Temp Balcony Fallguard  
Lower Roof Walkways & Hang-On Platforms  
RCD Tagging, Lead & Tool Tagging  
Safety Signs, First Aid Kits & Safety Gear

**1300 558 027**  
[www.buildsafe.net.au](http://www.buildsafe.net.au)